

BioWit[®] FMX

Biological tree protection
and growth aid
made in Carinthia



witasek[®]

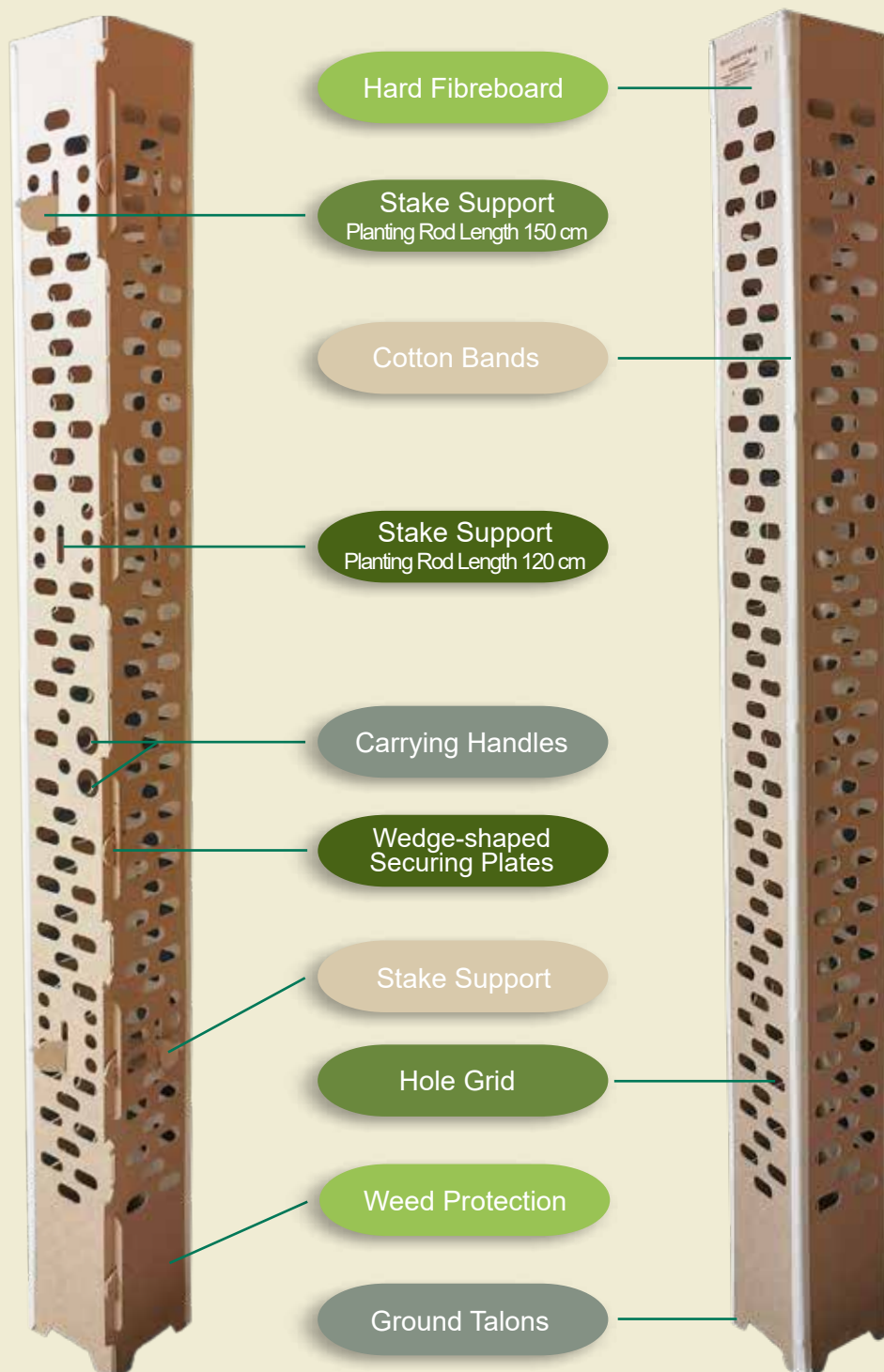
: Fundermax
For you to create

Biological tree protection and growth aid made in Carinthia

The BioWit® FMX consists of pre-cut sections of hard fibreboard held together by cotton bands.

The hard fibreboards contain no adhesives.

All materials are 100 % biodegradable.



Warum BioWit® FMX?

Discover the advantages of BioWit® FMX, the environmentally friendly and sustainable partner in the forest.

The BioWit® FMX is completely biodegradable.

Thanks to the practical handle and flat delivery handling is child's play.

The BioWit® FMX offers optimal protection against browsing and sweeping damage, so that young trees can grow undisturbed.

Due to the microclimatic conditions created by the material and the hole grid is created, the growth of the seedlings is optimally promoted.

Make the difference in forestry – with BioWit® FMX

Everything you need to know at a glance



Material: hard fibreboard made from local wood, free of adhesives



Sustainable: material 100 % biodegradable without residue,
Organic hard fibreboard leaves behind valuable fertilizer



Sewn with: cotton bands on the folded edges



Stability and longevity: cotton bands balance tension in the material



Locking system: specially developed with integrated locks and stake holders



Stake holders: fixes planting rod and shelter



Variable planting rod lengths: 120 cm and 150 cm



Carrying Handles: enables easy transport



Delivery: flat - saves transport volume



Browsing and Fraying Protection: for roe deer (120 cm)



Weed Protection: closed area at the bottom of the shelter as
weed protection



Hole Grid: ensures optimal lighting conditions and microclimatic conditions
(positive growth performance due to sunlight)



Suitable for: deciduous tree species



Protection Height: 120 cm



Growing Space Diameter: 14-15 cm



Edge Length: 11 cm



Colour: natural



Construction/Assembly

1st step:

Fold the shelter outwards once to the smooth side towards the smooth side. This breaks the holding points on the long edges.

2nd step:

Fold the shelter into a square.

ATTENTION: The smooth surface and the cotton bands are on the outside.

3rd step:

Insert the locking tabs into the specified slots as far as they will go. You will feel them click into place.

4th step:

Break out the wedge-shaped securing plates on the outer long side and insert them into the slots provided.

5th step:

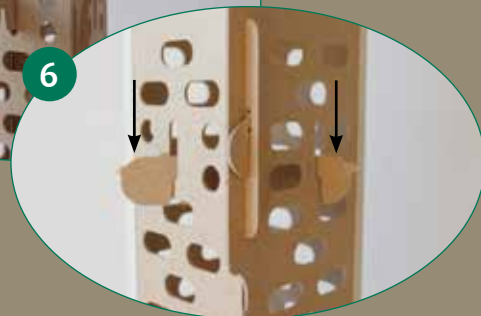
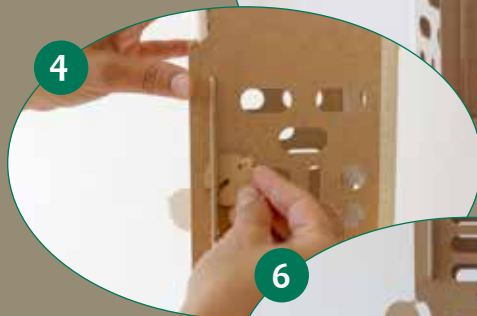
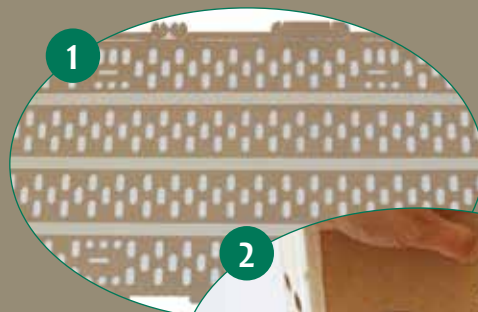
Place the shelter over the seedling and set up. Insert the planting rod on the side where the locking tabs are located.

The planting rod can also be hammered in in advance.

6th step:

Break out the stake holder on the long side and push diagonally through the vertical slots to the other side. By pushing downwards, the bracket snaps into place, fixes the stake and ensures a stable, square shape of the shelter.

Tip: Alternatively, a piece of non-galvanised wire, fed through the holes, can also be used.



Find out more on our website
or contact us directly
- we are here for you!



Art. No.: 111921



PflanzenSchutz GmbH

Witasek-Allee 2 | A-9560 Feldkirchen in Kärnten

Tel.: +43 (0) 4276/3230 | office@witasek.com | www.witasek.com