

CLASSIC PLANT PROTECTION

2024

witasek Care for your forest and vines – Increase the value!

CONTENTS – CLASSIC PLANT PROTECTION

Insect control (Insecticides), Marking paint

HyloPo® Pine Weevil Protection Collar (material: PP & bioplastic).....	89
WitaTrap® Weevil Catching Tube.....	89
Karate® Zeon – Type: Forest	90
Marking Paint "High Colour" Blue, Marking Paint Red	99
Crush® Speed Wasp Spray.....	105
Wasp Trap	105

Browsing protection – sprayable and paintable

WAM® LIQUID Forest Dispersion white – to prevent summer and winter browsing	92
WAM® EXTRA pink – to prevent winter browsing	93
Certosan® – to prevent summer and winter browsing	94
EPSOM	95

Protection from game damage: Odour barrier, Repellent

WAM®-Porocol® Odour Barrier	96
-----------------------------------	----

Stripping protection – paintable

Wöbra Stripping Stop	97
----------------------------	----

Root drying prevention

Witalgin (Forstalgin)	98
-----------------------------	----

Weed control (Herbicides)

Roundup® PowerFlex	99
--------------------------	----

Application tools, Accessories

Repellent Roller Tongs	95
Plastic Gloves "Painter".....	95

Application tools, Accessories

Battery-powered backpack sprayer with 10 litre capacity.....	101
Spray Guard for Battery-powered backpack sprayer	101
Battery and Charger for Battery-powered backpack sprayer	101
Compression Sprayer Mesto PICO 3235.....	100
Brass Tong-type Nozzle	100
Adapter for the Brass Tong-type Nozzle	100
Hollow Cone Nozzle 1.1 / Full Cone Nozzle TG 0.5 / Full Cone Nozzle TG 3	100

Rodent control (Rodenticides and Traps)

Storm® Ultra Happen, Storm® Ultra Secure.....	103
Flash® Bait Stations	104

Insect control (Insecticides)

Crush® Speed Wasp spray	105
Wasp Trap	105
Wasp bait.....	105

HyloPro® Pine Weevil Protection Collar



Top mechanical protection to prevent feeding damage by large brown pine weevil (*Hylobius abietis*)

**BEST PRICE
PRODUCT**

- state-of-the-art mechanical protection and stable closing mechanism
- easy to use and to install to the plant
- weevils cannot climb up smooth surface
- bent collar keeps weevils off the plant
- does NOT affect plant growth
- material: polyethylene or bioplastic (certified)
- remove and dispose of (or re-use) polyethylene protection collar after 3 to 4 years
- protection collar made of **bioplastic** can remain on plant – fully degrades leaving no residues
- colour: white/beige – colour of the protection collar makes it easy to spot the plant when performing mowing work
- **Installation:** Place HyloPro® Pine Weevil Protection Collar around the trunk of the plant before (pot plants) or after (bare-root plants) planting. Apply slight pressure to close the protection collar. Remove larger branches that prevent collar installation. Finally, push protection collar approx. 2 cm into the ground.



item no.	item	price (in €)	
		excl. VAT	incl. VAT
180511	HyloPro® Pine Weevil Protection Collar – material: PE (shipping unit: pack of 250 pcs.)	per pack	
	from 24 packs (pallet)		
	12 to 23 packs		
	1 to 11 packs		
180521	HyloPro® BioWit® Pine Weevil Protection Collar – material: bioplastic (shipping unit: pack of 250 pcs.)	per pack	
	from 24 packs (pallet)		
	12 to 23 packs		
	1 to 11 packs		



WitaTrap® Pine Weevil catching tube



The optimal trap for monitoring and catching the large pine weevil (*Hylobius abietis*)

The WitaTrap® Weevil Catching Tube is for determining the existence of and for combating the large pine weevil. The beetle is targeted and attracted by the pheromone rod. Using the entry lips, which are tapered inwards, it reaches the catching tube and can't get back out again.

- The trap has an opening at each end for maintenance.
- The lids are easy to open and close.
- There are two small openings on the bottom to ensure water can drain properly.
- application: 6–10 catching tubes per hectare
- catching tube length: 61 cm
- number of entry openings: 12
- material: polyethylene
- colour: grey



item no.	item	price (in €)	
		excl. VAT	incl. VAT
312821	WitaTrap® Weevil Catching Tube complete set – Catching Tube incl. pheromone	per set	
	from 30 sets		
	1 to 29 sets		
322811	HyloWit® (shipping unit: 1 pcs.)	per piece	
	from 100 pcs.		
	1 to 99 pcs.		

Karate® Zeon Forest



Fast acting insecticide, effective at very low wash concentrations, against pine weevils and bark beetles (*except: Xylosandrus*), free feeding moth caterpillars, plant lice and beetles feeding on leaves and needles (*except cockchafer*)

- Applications: insecticide for use in forests; is also effective when used for trap wood piles and trap trees
- Active substance: lambda-cyhalothrin (pyrethroid)
- Duration of effects: when used as recommended, the insecticide can be effective for up to 12 weeks
- The duration of effects is reduced in the presence of temperatures exceeding 25 °C
- Recommended time of application: sufficient duration of effects is ensured if the insecticide is applied on first appearance of the pest (= visible bore holes)
- For the early detection of infestation by the large pine weevil (*Hylobius abietis*), it is advisable to monitor the situation using weevil trap tubes
- Formulation: suspension in capsules – in this case, when the water in the capsule emulsion has evaporated, the micro-capsules burst and release the active substance
- UV stable
- Karate® Zeon Forest is rain-proof within one hour of drying
- Apply generously to any already infested plants
- If applying by dipping, dip only shoots and upper part of root in solution; do not dip the root itself
- Karate® Zeon Forest is rapidly active and is highly effective following ingestion and contact against all mobile stages of pest insects
- Our brass tong-type nozzle makes application easier when treating weevil infestation (see p. 100)

New: 500 ml container for treating infestation with:

Bark beetles (Scolytinae)

The large pine weevil (*Hylobius abietis*)

Free-feeding butterfly larvae

Aphids

Beetles that eat needles and leaves

Easy application with the backpack sprayer 10 l see page 101





Karate Zeon® Forst 1 l, Pfl. Reg. Nr.: 3061
Karate® Zeon Forst 500ml, Pfl. Reg. Nr.: 3061-901

item no.	item	price (in €)	
		excl. VAT	incl. VAT
512321	Karate Zeon® Forest (shipping unit: 1 bottle) (12 l per box, 600 l per pallet)	per litre	
	from 300 l (half pallet)		
	12-299 l		
	1-11 l		
512331	Karate® Zeon Forest (shipping unit: 1 bottle with 500 ml)	per litre	
	from 20 bottles		
	1-19 bottles		

Use pesticides carefully. Before use read the label and product information. This description is designed to give you an overview on various products. Always read the label and product information before using any product. Please comply with the instructions they contain.

Application and concentration – Karate® Zeon:

 <small>© U.Schmidt 2006</small>	Pine weevil protection Concentration of wash 0,5 % (= 5 ml Karate for 1 l wash)	
	Spraying treatment	Dipping treatment
wash per 1.000 plants	25-40 l	20-30 l
Productivity of 1 l Karate® Zeon	5.000-8.000 plants	6.700-10.000 plants
Calculation for application rate for Karate® Zeon	Amount Karate® Zeon in litre = $\frac{\text{Number of trees}}{5.000 \text{ bzw. } 8.000}$	Amount Karate® Zeon in litre = $\frac{\text{Number of trees}}{6.700 \text{ bzw. } 10.000}$

 <small>© U.Schmidt 2006</small>	Karate® Zeon for the control of bark and wood breeding beetles (bark beetles) except Xylosandrus germanus for the treatment of trunks	
	Treatment of individual trunks (standing or lying) and wood stacks	
	<u>If potential threat has been determined</u> (prevention):	<u>Before flight of beetles</u> (beetles are already in wood):
Concentration of wash	0,2 % (= 2 ml Karate for 1 l wash)	0,4 % (= 4 ml Karate for 1 l wash)
How much wash does 1 l Karate provide?	500 l	250 l
wash consumption	Individual trunk or stack 5 l wash per m³ wood for individual trunks 3 l wash per m³ wood for stacks (5 l wash per m³ for thicker trunk stacks)	
Calculation and application rate for Karate® Zeon	Treatment of individual trunks or thick trunk stacks: Amount Karate® Zeon in litre = $\frac{\text{m}^3 \text{ wood}}{100}$ Treatment of wood stack: Amount Karate® Zeon in litre = $\frac{\text{m}^3 \text{ wood}}{170}$	Treatment of individual trunks or thick trunk stacks: Amount Karate® Zeon in litre = $\frac{\text{m}^3 \text{ wood}}{50}$ Treatment of wood stack: Amount Karate® Zeon in litre = $\frac{\text{m}^3 \text{ wood}}{83}$

SPRAYABLE AND PAINTABLE BROWSING PROTECTION – Interesting facts



Browsing damage on unprotected spruce

Game feeds all year, particularly in winter, on shoots and buds of plants (= browsing).

Protect your plants from browsing!



See page 45 for mechanical browsing protection

See pages 16 and following for tree shelters/protectors

WAM® LIQUID Forest Dispersion white



Spray agent against summer and winter browsing on coniferous and deciduous woods

– VIDEO –



- active substance: aluminum silicate (kaolin)
- liquid, ready-to-use spray agent

• **colour: white**

• **four-fold effect:**

- repelling flavour
- repelling odour
- mechanical protection layer
- white colour

• **offers sun protection:**

Young forest plants are still very sensitive to the sun. The white colour offers optimal sun protection as it reflects the radiation.

• very well tolerated by plants

• **Application and quantity needed:**

- Apply to terminal shoot of dry plant, **do not apply under frost conditions.**

- quantity needed:

from 2 to 3 kg/1,000 plants (depending on length of shoots and needles)

• Clean spraying devices with water immediately after use!

• **Note:** After long periods of rain, we recommend a waiting time of 2 to 3 days before application.

• **Why use WAM® LIQUID:**

- very good spraying characteristics
- very low quantities needed
- very good marking characteristics (= good visibility)
- very durable and very low priced
- very good results
- proven
- ready to use – but still water-dilutable (up to a max. of 10%) – which makes it an even better deal!



Easy application with the backpack sprayer 10 l see page 101



WAM® liquid, Pfl. Reg. Nr. AUT: 2469/0

item no.	item	price (in €)	
		excl. VAT	incl. VAT
211211	WAM® LIQUID – Forest Dispersion white (shipping unit: 5 kg canister)	per kg	
	from 480 kg (pallet)		
	250 to 475 kg		
	5 to 245 kg		

Use pesticides carefully. Before use read the label and product information. This description is designed to give you an overview on various products. Always read the label and product information before using any product. Please comply with the instructions they contain.

WAM® EXTRA pink



WAM® EXTRA is in accordance with regulation/directive (EC) 834/2007 as amended and is bio-compatible



Highly effective and economic browsing repellent that protects from **winter browsing** by roe deer, red deer and chamois on coniferous and deciduous woods in forestry

- active substance: quartz sand
- makes browsing unpleasant – angular structure of quartz grains provides for optimum browsing protection
- **formulation: paintable paste in handy bucket or plastic bag**
- ready-to-use, **no stiring!**
- Very well tolerated by plants, excellent sprouting of shoots!
- **colour: pink**

– VIDEO –



- **Application and quantity needed:** against winter browsing on deciduous and coniferous woods by roe deer, red deer and chamois: can be applied undiluted; application from autumn to winter, apply to terminal shoot of dry plant, **do not use under frosty conditions**. Quantity needed: from 2 kg/1,000 plants – depending on plant size and needle mass
- **Instructions for use:** WAM® EXTRA pink is ready-to-use, no time-consuming mixing or waiting. Apply WAM® EXTRA pink on endangered plant parts of deciduous woods or the terminal shoot of coniferous woods, fully, evenly and thinly covering the respective parts. **Do not paint terminal bud excessively!** To prevent browsing by roe deer, paint 10 cm of the terminal shoots; to prevent browsing by red deer, paint the entire terminal shoot (red deer may feed on the lower part of the terminal shoot if that part is not covered by the repellent). Apply from bottom up. Apply with gloves, brush, double brush or Repellent Roller Tongs (see page 94). Drying of paint (= highly adhesive = excellent protection) is essential.
- **Note:** WAM® EXTRA is a deer repellent. Its careful and throughout application is necessary for satisfactory protection. To achieve permanent protection, WAM® EXTRA pink has to dry. For that reason, do not apply on wet and frozen plants or when it rains, when it is foggy, or under frost conditions.
- **Plant compatibility:**
WAM® EXTRA pink can be applied on all tree types. The dry and weatherproof paint remains porous and permeable by air so that buds can swell and sprout unhindered and without delay.

WAM® EXTRA pink, Pfl. Reg. Nr. AUT: 2779/0

item no.	item	price (in €)	
		excl. VAT	incl. VAT
220801	WAM® EXTRA pink – 5 kg bucket / plastic bag	per kg	
	from 550 kg (pallet)		
	250 to 545 kg		
	5 to 245 kg		
220851	WAM® EXTRA pink – 2,5 kg bucket / plastic bag	per kg	
	from 495 kg (pallet)		
	290 to 492.5 kg		
	2.5 to 287.5 kg		
221071	WAM® EXTRA pink – 1 kg bucket	per kg	
	from 252 kg (pallet)		
	120 to 251 kg		
	1 to 199 kg		

WAM® EXTRA – 1 kg bucket available without certificate of competence

Use pesticides carefully. Before use read the label and product information. This description is designed to give you an overview on various products. Always read the label and product information before using any product. Please comply with the instructions they contain.

Certosan®



Biological repellent
for year-round use
against browsing or
gnawing damage by:



rabbit/hare



roe deer



red deer



Biological, sprayable repellent to prevent game browsing and gnawing damage on coniferous and deciduous woods in forestry, orchards, on public lands and on ornamental plants

- to prevent browsing damage in summer and in winter
- active substance: 998 g / kg blood meal
- formulation: water dispersible powder
- very well tolerated by plants
- colour: red brown



Application and period effective:

- protects from summer (effective 6 to 8 weeks) and winter (effective 4 to 6 months) browsing damage in forestry, on ornamental plants, in orchards and on public lands
- against year-round gnawing and browsing damage on orchards and on public lands by rabbit and hare
- apply to dry plant, **do not use under frost conditions**

Quantity needed:

Mix Certosan® at a ratio of 1:10 with water (1 kg Certosan® and 10 litres of water)

- **painting/sprinkling method:** 5 l of wash for 1,000 plants (500 g of Certosan®)
- **dipping method:** 15 l of wash for 1,000 plants (1.5 kg of Certosan®)
- **spraying method:** 200 l or 400 l of wash per hectare (20 kg of Certosan®)

item no.	item	price (in €)	
		excl. VAT	incl. VAT
210611	Certosan® (shipping unit: 1 kg pack)	per kg	
	from 10 kg		
	1 to 9 kg		

Certosan®, Pfl. Reg. Nr.: 3011/0

Properties and effect mechanism:

Certosan® repels game by odour. It consists of biological components. The Certosan® odour does not only protect the parts of the plant the repellent is applied on but also the newly grown shoots.

Mixing:

Certosan® can be mixed with insecticides. Do not prepare more Certosan® wash than you intend to apply within 24 to 48 hours since then, depending on the outside temperature (in particular from 18°C and above), the actually odourless Certosan® wash turns into a smelling broth. This does not affect the excellent repelling effect of Certosan®.

Application methods:

Sprinkling, spraying, painting and dipping or apply the powder through **strewing or dusting** on plants that are wet or moistened by fog.

Easy application with the
backpack sprayer 10 l
see page 101



Visibility:

Red coating on protected plants slowly loses its colour, but keeps effective.

Weather conditions:

Certosan® dries fast. Therefore, subsequent rain does not wash permanent coating off.

Use pesticides carefully. Before use read the label and product information. This description is designed to give you an overview on various products. Always read the label and product information before using any product. Please comply with the instructions they contain.

EPSOM



certificate of competence
is required!

Sprayable agent preventing winter browsing by game: protects deciduous and coniferous trees against damage caused by red deer, roe deer, fallow deer, sika deer, mouflon and rabbits/hares.

- EPSOM comes in ready-to-use form and does not need to be diluted prior to application
- Game find its odour and taste unpleasant, thus keeping these away from the protected plants
- Can be applied in any weather – even to plants covered in dew, in light rain and during frost
- Ready for spraying at ambient temperatures as low as -10 °C
- Dries very rapidly and adheres well to all plant surfaces
- Colour: black

Instructions for use and recommended application quantities:

EPSOM should be sprayed onto the terminal shoots of plants.

- 2 litres/1000 plants (actual quantities required will depend on the situation, the device used for application and the type of tree to be protected)
- Application form: spraying at ambient temperatures no lower than -10 °C

item no.	item	price (in €)	
		excl. VAT	incl. VAT
	EPSOM (shipping unit: 5-litre canisters)	per kg	
	from 600 litres		
	300–595 litres		
	5–295 litres		



Repellent Roller Tongs



Tool for the application of water-soluble browsing repellents (e.g. WAM® Extra pink)

SERVICE
PRODUCT

- With nylon rollers for the application of the repellent on terminal shoot.
- Clean tool with water immediately after use.

item no.	item	price (in €)	
		excl. VAT	incl. VAT
297031	Repellent Roller Tongs	per piece	
	1 pce.		
297011	Spare rollers for Repellent Roller Tongs	per pair	
	1 pair		

Plastic Gloves "Painter"



Gloves for work associated with the application of browsing repellents and in inhospitable weather conditions

SERVICE
PRODUCT

- inside made of cotton for best **wearing comfort**
- rough, non-slip rubber surface **provides good grip** when performing painting work (e.g. applying browsing repellents)

item no.	item	price (in €)	
		excl. VAT	incl. VAT
297911	Plastic Gloves "Painter"	per pair	
	from 10 pairs		
	1 to 9 pairs		

WAM®-Porocol®**Odour barrier to repel game**

Wam®Porocol® is a synthetic odorous substance which is filled into a weatherproof plastic column where it evaporates. The odorous substance is **effective up to 4 to 6 months**. Afterwards, the column can easily be refilled.

Game is an integral part of the forest and nature. These measures help keeping it in its natural environment.

Protect the game against:

- **collisions with vehicles!**

Install evaporation columns along roads to prevent game accidents. Install one evaporation column approx. every 50 to 60 m keeping a distance of approx. 15 to 30 m to the road.

- **losses of young game/fawns (from being killed by mowing)!**

Ideally suitable to **save fawns**. Install evaporation columns on the respective site 1 to 2 days before mowing.

- **to deter game from entering danger zones (4 to 5 columns per hectare)**

Install evaporation columns approx. every 40 m enclosing the field.

- By turning the evaporation head, you can control the release of the odorous substance.

- Under certain circumstances, e.g. when game population is too strong, repelling measures may not have the desired effects.

- **effective:** approx. 4 to 6 months

If columns are exposed to direct sunlight, the odorous substance evaporates within approx. three months.

- **Effectiveness in winter:** Intensity remains the same. Since temperature are lower in winter, WAM®-Porocol® remains effective even longer during that period.

- **1 set** = 10 small bottles with odorous substance (ready-to-use)
+ 10 wicks
+ 10 evaporation columns



– VIDEO –



for use up to -20°C

item no.	item	price (in €)	
		excl. VAT	incl. VAT
270651	WAM®-Porocol® – Set	per set	
	from 5 sets		
	1 to 4 sets		
270661	WAM®-Porocol® – Odorous Substance incl. Wicks (shipping unit: 10 pcs.)	per piece	
	from 10 pcs.		
299111	WAM®-Porocol® – Cover	per piece	
	1 pce.		
299121	WAM®-Porocol® – Wick	per piece	
	1 pce.		
299101	WAM®-Porocol® – Evaporation Head	per piece	
	1 pce.		

PAINTABLE STRIPPING PROTECTION – Interesting facts



Stripping damage on unprotected spruce

Fallow and sika deer, moufflon and, in particular, red deer may, for various reasons, gnaw and feed on bark (= bark stripping), especially on spruce bark. Bark stripping can occur in winter and in summer. Stripping damage, i.e. the absence of bark on trees, makes the tree prone to fungus attacks, which may cause a massive decrease in value of the wood. Stripping protection is applied to protect the most valuable trees (crop trees) from a diameter of at least 15 cm which are supposed to eventually produce the desired benefits (a maximum of 500 trees per hectare).

For mechanical stripping protection see pages 46 to 47



Wöbra Stripping Stop



Tip: Clean bark by using a broom or brush. This will ensure a better hold of Wöbra.



Long-term protection against bark stripping by red deer, sika deer, fallow deer and beaver in forestry and in orchards, on ornamental plants, in gardens and allotments

- active substance: quartz sand
- formulation: paintable, easy to apply paste, ready-to-use after stirring
- highly effective and very long durable – **remains up to 15 years on trunk**
- **colour: transparent** – therefore does not disturb landscape

• Properties and effect mechanism:

Use special brush to apply Wöbra. Wet paste is grey, turns transparent when dry. Apply Wöbra also to roots running on the surface of the ground. After drying, Wöbra will remain on trunk for up to 15 years. Brush off thick algae layers or loose bark before treatment. If Wöbra is applied on conifers, we recommend lopping the trees before treatment.

- **Quantity needed:** approx. 300 g/trunk when trunk diameter in breast height is 10 cm and height protected is approx. 2 m
- **Weather conditions:** application from + 8°C in dry conditions. Trunk temperature should also be above + 8°C.

item no.	item	price (in €)	
		excl. VAT	incl. VAT
250811	Wöbra Stripping Stop (shipping unit: 10 kg bucket)	per kg	
	from 320 kg (pallet)		
	10 to 310 kg		
	Mechanical Stripping Protection		
	see Tree Protection pages 46 and 47		

Wöbra, Pfl. Reg. Nr.: 3364/0



Stir Wöbra well before use ...



... Wöbra is still gray when applied ...



... and becomes **transparent** after it dries out.

Use pesticides carefully. Before use read the label and product information. This description is designed to give you an overview on various products. Always read the label and product information before using any product. Please comply with the instructions they contain.

Witalgin



Ensures that plant takes root – prevents drying damage

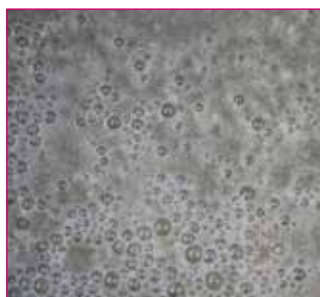
Protection from root drying for forest woods and nursery trees, improvement of water supply

- produced from sea algae
- can absorb water to a multiple of its own weight (= water reservoir for plant)
- environmentally neutral
- **Prevent transplant shock and increase drought resistance of plants:**
dip roots into Witalgin wash before planting
concentration of wash: 0.5 to 1.5 %
forest plants: 0.8 % (only 800 grams of Witalgin per 100 litres of water)
large plants: 1 to 1.5 %
planting hole suitable for pot plants and bare-root plants: put ca. 1/2 to 1 teaspoon into planting hole, then plant the plant
Witalgin acts as a water reservoir for plants.
- **Improve water supply and soil** (e.g. when preparing seedbeds): This optimises germination, water supply and nutrition.
Application: Depending on soil type and seedlings: 10 to 20 g/m². To ensure a uniformly even application, you can mix Witalgin with sand before use.
- **Planting vegetation on scarps, also by machine:** Spraying method guarantees very good seedling growth. This ensures rapid greening up of the respective area.
Application: Add 2 to 6 g of Witalgin per 1.5 l of water. This ensures an increase in seedling growth by up to 60%.

Practical tip: example for bare-root forest plants

800 g of Witalgin are stirred into 100 l of water. The wash will treat between 500 and 2,000 bare-root plants.

This small effort will promote the plants taking root considerably!



- **Mixing:** Quantities up to 100 litres of the solution can be mixed by hand. We recommend using a mechanical stirring device for quantities exceeding 100 litres.
- **Mixing by hand:**
Fill water quantity needed in container made of plastic. Swirl water, add Witalgin powder slowly and consistently to the swirled water while stirring well and continue to stir for several minutes. Let mixture rest for two hours. This allows clots that may have formed to dissolve. Then stir well again.
- **Mechanical mixing:**
When using an electrically driven stirring device with an impeller, the Witalgin solution is ready-to-use immediately. Please use stirring devices according to the respective user instructions.

Note: Do not use galvanised buckets or other such vessels to stir or store the solution. Use Witalgin solution within three days from preparation. The use of synthetic wetting and dispersion agents is not recommended.

item no.	item	price (in €)	
		excl. VAT	incl. VAT
180431	Witalgin – 1 kg pack (shipping unit: 1 kg bag)	per kg	
	1 kg		
180411	Witalgin – 25 kg pack (shipping unit: 25 kg bag)	per kg	
	25 kg		

Marking Paint "High Colour"



Colouring tablet to colour plant protectant washes colour: blue

- By colouring the washes you can immediately see whether the treated plants or stems have been covered.
- easy to dose – 1– 2 tablet for approx. 25 l of wash
- can of 40 tablets will be sufficient for approx. **500 – 1,000 litres of spray wash**

SERVICE
PRODUCT

item no.	item	price (in €)	
		excl. VAT	incl. VAT
590841	Marking Paint "High Colour" Blue – can of 40 tablets	per can	
	from 10 cans (box)		
	1 to 9 cans		

Marking Paint Red



Colourant to temporarily colour plant protectant washes colour: red

- By colouring the washes you can immediately see whether the treated plants or stems have been covered.
- Colourant remains **visible on treated plants for several hours**.
- excellent colouring properties (red)
- formulation: liquid
- **application: add 10 ml of the marking paint to every 10 litres of a ready-to-use wash**

SERVICE
PRODUCT

item no.	item	price (in €)	
		excl. VAT	incl. VAT
590851	Marking Paint Red – 50 ml bottle	per bottle	
	from 20 bottles (box)		
	1 to 19 bottles		

Roundup® Future

certificate of competence
is required!

Do only apply to spruce, fir, pine (do not apply to deciduous woods and larch trees: severe damage may result)

Herbicide to control monocotyledonous and dicotyledonous weeds

- water-soluble concentrate with the active substance glyphosate 480 g/l
- for use in forestry, viticulture, agriculture, orchards, vegetable gardening
- reliable and effective, even when weather conditions are not favourable (e.g. dew-wet plants):
 - rain-proof after only one hour
 - can be applied on slightly dew-wet plants and when temperatures are low (but not freezing)
- quantities needed are very low: 1.5 to 3.75 litres/hectare
- after treatment wait one week before sowing
- time of application: late application before harvest, after harvest, before sowing, up to 5 days after sowing

Application examples:

vineyards and orchards: in middles (e.g. between rows of vines): 0.9 to 1.4% (note: protect young vines to avoid damage, e.g. with vine shelters)

forests: spot treatment with spray guard or wiping tool, max. 7,2 l/ha (25-50%):
 - 0.9% to 1.4%, broadcast treatment (from August)
 - 0.6% after cessation of growth

Roundup® PowerFlex, Pfl. Reg. Nr.: 3437

item no.	item	price (in €)	
		excl. VAT	incl. VAT
531921	Roundup® Future – 5 l pack	per litre	
	from 20 l		
	5 to 15 l		
531931	Roundup® Future – 15 l pack	per litre	
	from 30 l		
	15 l		



Easy application with the backpack sprayer see page 101.

Use pesticides carefully. Before use read the label and product information. This description is designed to give you an overview on various products. Always read the label and product information before using any product. Please comply with the instructions they contain.

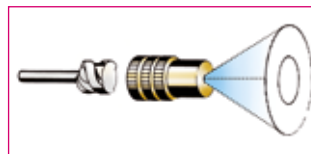
Compression Sprayer Mesto PICO 3235



Compression sprayer for the application of pesticides, 5 l fill volume

- operating pressure: 3 bar
- precision piston-type pressure gauge with safety valve
- spray wand: brass 40 cm, 360° rotatable
- hollow cone nozzle, 1.1 mm nozzle orifice, brass
- tank made of top quality plastic
- empty weight: 1.3 kg
- holder for spray and extension wand
- built-in filling funnel
- can be carried on the side
- discharge valve with filter
- hose: 1.3 m
- fill volume: 5 l

SERVICE
PRODUCT



Spray pattern hollow cone nozzle



Spray pattern full cone nozzle



Hollow Cone Nozzle 1.1



Full Cone Nozzle TG 0.5 / TG 3

item no.	item	price (in €)	
		excl. VAT	incl. VAT
290641	Compression Sprayer Mesto PICO 3235 – fill volume: 5 l	per piece	
	1 pce.		
297661	Hollow Cone Nozzle 1.1	per piece	
	1 pce.		
297611	Full Cone Nozzle TG 0.5 – 0.5 mm nozzle orifice	per piece	
	1 pce.		
297631	Full Cone Nozzle TG 3 – 3 mm nozzle orifice	per piece	
	1 pce.		

Brass Tong-type Nozzle



Tong-type nozzle for pine weevil control products (Karate® Zeon), liquid game repellents (WAM LIQUID®) and fraying protection products

- spray angle infinitely variable through bending
- 2 hollow cone nozzles (brass 1.1 mm nozzle orifice)

SERVICE
PRODUCT

item no.	item	price (in €)	
		excl. VAT	incl. VAT
298011	Brass Tong-type Nozzle – 415 mm x 215 mm	per piece	
	1 pce.		

Adapter for Brass Tong-type Nozzle



Adapter for the Brass Tong-type Nozzle for the battery-powered backpack sprayer 10 l

- Adapter for the Brass Tong-type Nozzle for the battery-powered backpack sprayer 10 l
- the Brass Tong-type Nozzle is perfect for pine weevil control with Karate® Zeon and for liquid game repellents (e.g. WAM® flüssig)

SERVICE
PRODUCT



item no.	item	price (in €)	
		excl. VAT	incl. VAT
297671	Adapter Brass Tong-type Nozzle for battery-powered backpack sprayer	per piece	
	1 pce.		

Battery-powered backpack sprayer 10 l / LI-ION

Battery-powered backpack sprayer for spreading pesticides, 10 litre capacity

SERVICE
PRODUCT


The battery-powered backpack sprayer is setting new standards. With a minimum weight of 2,780 grams, it weighs just as much as a manual backpack sprayer! The lithium-ion battery is easy to remove and insert. The ergonomic shape of the tank means it can be worn in a way that is comfortable for your back.

Scope of delivery: the backpack sprayer is fully-equipped with a battery, charger, fibreglass spray lance, aluminium spray lance, set of nozzles and a filter.

- Battery: 12 V – 2.5 Ah
- Spray pressure: consistently 2.5 bar
- Battery runtime: 3.5 hours
- Spray length: 78 cm



item no.	item	price (in €)	
		excl. VAT	incl. VAT
290671	Battery-Powered Backpack Sprayer – 10 litre capacity	per piece	
	1 pce.		
290691	Spray Screen for Battery-Powered Backpack Sprayer	per piece	
	1 pce.		
290681	Battery LI-ION for Battery-Powered Backpack Sprayer	per piece	
	1 pce.		
290731	Charger LI-ION for Battery-Powered Backpack Sprayer	per piece	
	1 pce.		
298011	Brass Tong-type Nozzle – 415 mm x 215 mm	per piece	
	1 pce.		
297671	Adapter Brass Tong-type Nozzle for battery-powered backpack sprayer	per piece	
	1 pce.		



Storm® Ultra



The new Storm® Ultra with increased attraction for rats and mice



Storm® Ultra contains the best substance (flocoumafen) against rats and mice.

The attraction is doubled thanks to a new formula based on an innovative binder without any wax. The stability of the bait in the application environment is unparalleled, even with high temperature fluctuations.

Application tip: use rodenticides for as long as it takes for the population to be permanently eliminated.



Storm® Ultra Happen



Storm® Ultra Secure

Thanks to the reduction of the substance, Storm® Ultra is not classified as toxic and has not lost its effectiveness.

That risk to people arising from its use has been significantly reduced.

It is the only anticoagulant rodenticide with a substance concentration of 25 ppm without increased costs for additional documentation and application requirements.

The application and effect are the same as with conventional Storm® products!

As usual, Storm® Ultra is also effective against anticoagulant-resistant rats and mice!

Product description:

- contains 25 ppm (0.0025%) flocoumafen
- Ready-to-use bait, effective even if ingested just once!
- innovative BASF binder
- extremely tasty and appealing for rodents (grain-based)
- contains the bitter substance denatonium benzoate and a warning dye
- Available in two sizes: Storm® Ultra Happen (5 g) and Storm® Ultra Secure (25 g)
- **Only available for professional users (e.g. farmers) or licensed pest controllers - not for private persons!**



This catalogue is designed to give you an overview on various products. Use biocides safely. Always read the label and product information before using any product. Please comply with the instructions they contain.

Because of the danger of infection (pathogens on the rodents), always wear protective gloves. Bait stations shall be clearly marked to indicate that they contain rodenticides and shall not be touched.

Storm® Ultra Happen



Extremely effective and attractive Storm® Ultra Happen bait for quickly controlling rats and mice



- highly effective
- particularly attractive for rats and mice
- with high grain content (without wax)
- quick and easy to place the bait
- for baiting inside and outside under variable conditions
- **moisture resistant** (with mould protection) and temperature resistant
- Storm® Ultra Happen should only be applied to bait stations (see page 100).



Storm® Ultra Happen should only be applied to bait stations (see page 100).

item no.	item	price (in €)	
		excl. VAT	incl. VAT
552081	Storm® Ultra Happen (shipping unit: 3 kg pack) (1 box = 12 kg)	per kg	
	from 288 kg (pallet)		
	144 to 285 kg		
	3 to 141 kg		

Target Organism	Area of Application	Application amount per Bait Point
house mouse	indoor and outdoor area (around buildings)	15 to 25 g corresponds to 3 to 5 Storm® Ultra Happen
brown rat and house mouse	indoor and outdoor area (around buildings)	50 to 75 g corresponds to 10 to 15 Storm® Ultra Happen

Storm® Ultra Secure



Extremely effective and attractive Storm® Ultra Secure bait for quickly controlling rats and mice



Storm® Ultra Secure is indispensable for professional controlling of rats and mice!

The ring bait is stable and can be fixed to the bait boxes properly. That means it's not possible for it to be carried off. This presents an ideal control opportunity to see how the bait is taken.

This is done through so-called impulse baiting. This prevents too much bait from being used. Thanks to precise dosing and control, Storm Ultra Secure is extremely economical to use!

- highly effective
- particularly attractive for rats and mice
- with high grain content (without wax)
- for baiting inside and outside under variable conditions
- quick and easy to place the bait
- **moisture resistant** (with mould protection) and temperature resistant
- Storm® Ultra Secure should only be applied to bait stations (see page 100).



item no.	item	price (in €)	
		excl. VAT	incl. VAT
552091	Storm® Ultra Secure (shipping unit: 3 kg pack) (1 box = 12 kg)	per kg	
	from 288 kg (pallet)		
	144 to 285 kg		
	3 to 141 kg		

BAIT STATIONS – for use with Storm® Ultra baits

All bait stations feature a safety lock to prevent unauthorised access, bait stations are durable, impact resistant, often reusable and excellently suitable for use with Storm® Ultra baits.

Flash® Mouse Bait Station



Bait station for mice, excellently suitable for use with Storm® Ultra baits



- size: 125 mm x 100 mm x 40 mm
- material: PP
- colour: black

item no.	item	price in (€)	
		excl. VAT	incl. VAT
559041	Flash® Mouse Bait Station – 125 mm x 100 mm x 40 mm	per piece	
	from 72 pcs. (box)		
	1 to 71 pcs.		

Flash® Rat Bait Station



Bait station for rats, excellently suitable for use with Storm® Ultra baits



- size: 230 mm x 190 mm x 95 mm
- material: PP
- colour: black
- special feature allows attachment to walls etc.



item no.	item	price in (€)	
		excl. VAT	incl. VAT
559051	Flash® Rat Bait Station – 230 mm x 190 mm x 95 mm	per piece	
	from 20 pcs. (box)		
	1 to 19 pcs.		

Flash® Combi Bait Station



Bait station for mice and rats, excellently suitable for use with Storm® Ultra baits



- size: 325 mm x 255 mm x 155 mm
- material: PP
- colour: black
- bait station comes with bars to securely hold bait and an easy-to-clean, removable bait compartment
- special feature allows attachment to walls etc.

item no.	item	price in (€)	
		excl. VAT	incl. VAT
559071	Flash® Combi Bait Station – 325 mm x 255 mm x 155 mm	per piece	
	from 8 pcs. (box)		
	1 to 7 pcs.		

Crush® Speed Wasp Spray

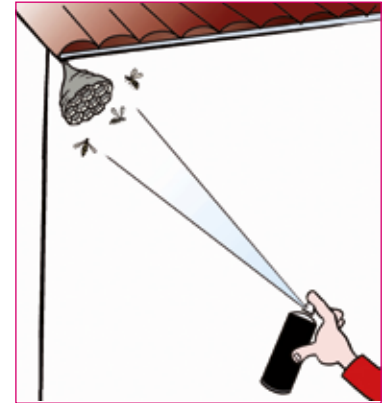


Insecticide for immediate wasp control

- excellent **immediate and long-lasting effect** against wasps and their nests, **safe application**
- **spray range: approx. 4 to 5 metres**
- Best results are achieved when applied in the morning or in the evening, as wasps are in their nests.
- **Wasps die within seconds when they come in contact with the spray and have no chance to sting.**



© Ioannis Pantzi - Fotolia.com



item no.	item	price (in €)	
		excl. VAT	incl. VAT
518011	Crush® Speed Wasp Spray – 750 ml can (24 cans/box)	per can	
	from 12 cans		
	1 to 11 cans		

This catalogue is designed to give you an overview on various products. Use biocides safely. Always read the label and product information before using any product. Please comply with the instructions they contain.

Wasp Trap & Wasp Bait



Trap for wasps and other insects for home and garden

- the traps are hung outdoors
- the container is filled with the wasp bait (see below)
- one box contains two traps
- **Wasp baits for wasp traps:**
 - to catch wasps
 - easy to use
 - no risk to humans & other animals
 - safe for plant, user & environment



© Ioannis Pantzi - Fotolia.com



item no.	item	price (in €)	
		excl. VAT	incl. VAT
315881	Wasp Trap (pack incl. 2 pieces)	per pack	
	from 10 packs		
	1 to 9 packs (2 pieces per pack)		
315941	Wasp Bait for Wasp Trap - Bottle of 500 ml	per piece	
	from 10 pcs.		
	1–9 pcs.		

**BEST PRICE
PRODUCT**